


# Recognising students with Attention Deficit Hyperactivity Disorder (ADHD)

ADHD is not a learning disability, so it does not impact the level of intelligence of a student, but it can make learning difficult. The presentation of ADHD characteristics varies for each student and can include:



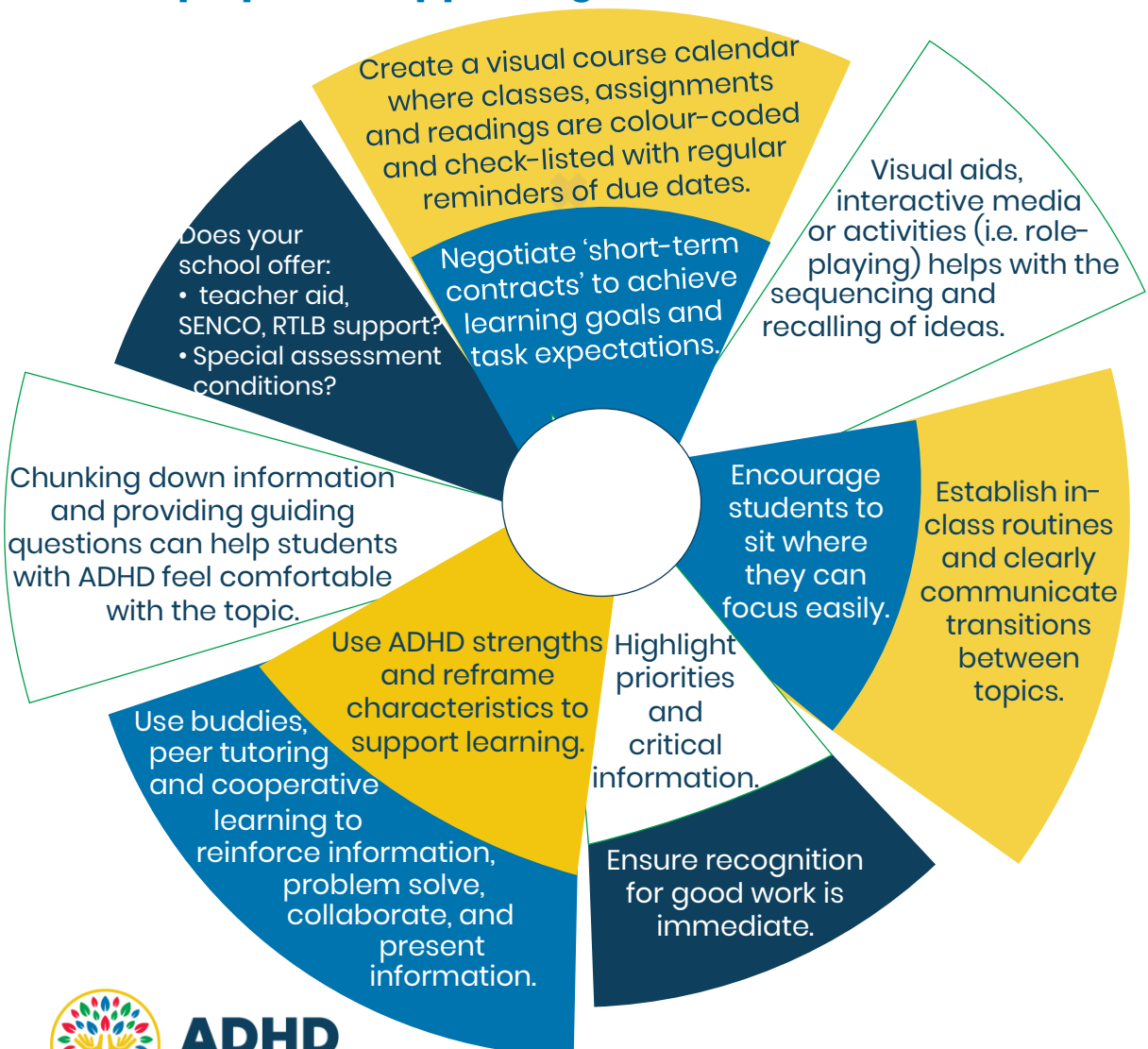
- leadership
- sense of humour
- problem-solving
- persistence and energy
- empathy and sensitivity
- creativity, enterprise and willingness to take risks.



- impulsively calling out, acting without thinking or talking excessively
- grasping and retaining important information
- being attentive and organised
- settling down to work
- learning routines.

*"I know this student who has so much potential. He's highly intelligent, and he just couldn't focus; couldn't apply himself." - Teacher*

## Top tips for supporting students with ADHD



**ADHD**  
New Zealand

Go to [ADHD.org.nz/school](http://ADHD.org.nz/school)

Developed with support from the [Sutherland Self Help Trust](#).